

A Message from the President

Darlene Entringer- President

HELLO LADIES OF HEATHROW WOMEN'S CLUB! We are exploring numerous ways to reach out to you through a variety of tools – our recorded Zoom calls posted on our HWC website and the HWC Facebook site; email messaging (please continue to check your email “trash” or “spam” to make sure our communications have not been routed there!); and online Zoom committee meetings. We are preparing to host a live Zoom call to include all of you – don't panic yet since we will hold some “practice” sessions to work out the wrinkles! If you are like me, you are “kicking and screaming” into this all-encompassing online world! Slowly, but surely, we will make it all work out! I am very grateful for our technology-oriented members who help make all of this happen!

Along with several of our members, *I Zoomed into the “Faces of the Future” virtual breakfast for the Boys and Girls Clubs.* As usual, it was inspirational to see the amazing accomplishments of some of their kids and the passion of their leaders. Our contributions – both physical and monetary – are integral to

their continuing success, especially during this very stressful time for the kids and their parents. I am so proud of HWC's ongoing commitment to this awesome organization!

As we enter the season of THANKSGIVING, there is so much to be thankful for! *Our club is 100 members strong* – we are extremely grateful that so many of you have remained connected during this very challenging time. And, we continue to be grateful for your generous participation in our fundraising activities when our charities have even greater needs as they support area women and children. I hope you and your families are safe and sound and able to be grateful for the blessings in your life!

Sincerely from your friend and fellow HWC member,

*Darlene Entringer- President
Heathrow Women's Club/Heathrow Women's Club Charities, Inc.
President@heathrowwomensclub.org
407-221-7175*

Heathrow Women's Club
Heathrow Women's Club Charities, Inc.
contact@heathrowwomensclub.org

The Heathrow Women's Club Charities Inc. is a charitable and social 501(c)(3) organization
Registration #: CH17228

Spotlight

Linda Caron

by Kerriane Arnold



This month's spotlight is our treasurer, Linda Caron. Linda joined HWC in 2013. She was impressed by the club's charitable endeavors and the chance to make new acquaintances. (SOCIALIZING WITH A PURPOSE). She enjoys helping at the registration table (she is hoping we will have luncheons again soon), working with *SafeHouse*, *Boys and Girls Club*, and participating in the *Secret Santa* program.

Linda grew up in Connecticut. She had one brother Bryan who died at the age of 13 in an accident on her grandparents' farm in western Massachusetts. She graduated from Wheaton College in Norton, Massachusetts, with a BA degree in mathematics and had a career in banking, real estate, and teaching. She retired from Lake Highland Preparatory School in 2010.

Linda married her high school sweetheart Dean Price the week after college graduation in 1969. They lived in several states (Connecticut, New York, New Jersey, and Florida) during their 35-year marriage. They moved to Central Florida at the end of 1989 for the weather (the week it SNOWED

here!). She lived in Tusawilla until 2005. Linda has a 42-year-old daughter Amanda. Amanda and her husband Shaun live in Tacoma, WA, where she works for The College Board.

Linda's husband Dean died of cancer in 2004. She moved to Texas in 2005, returning to Florida in 2007. Linda moved to Maine in 2010 when she got engaged to her present husband Lee. They returned to Florida in 2012, settling in Heathrow.

Something unique about Linda is she married her brother-in-law!!! Lee's wife Jean and her first husband, Dean, were sister and brother. Jean also died of cancer. Linda has known Lee since she was 17. As her daughter, Amanda says, "Lee is my uncle, my godfather, and my stepdad!!!" Are you COMPLETELY CONFUSED???

Linda enjoys reading, book club, baking, gardening, knitting, and going to flea markets. Linda and her husband Lee have a booth at an antique mall in Oviedo - The Coop Antiques. She specializes in Pyrex, vintage Franciscan dinnerware, Longaberger baskets, cross stitch artwork, etc.

Celebrating 33 years of socializing with a purpose and helping women and children in Seminole County

Lee specializes in military and aviation items. It's a fun "hobby" and gives them an excuse to visit flea markets and antique shows!!! Linda, along with a friend, also established a prayer shawl ministry at her church.

Kerriane Arnold
Public Relations Chair
PR@heathrowwomensclub.org
407-617-1343

Membership & Hospitality

Judy Quattry - Membership & Hospitality Chair

As of October 21, 2020, I am happy to announce that membership has grown to 100 Heathrow Women's Club members. So far this year we have 3 new members. We are hoping that in the near future we will be able to meet in person and that will help us to increase our membership. Our new members have become active in the club and are participating in both Book Club and helping to create the HWCC Cookbook.

To view our new member's picture and read their bios, please access the Heathrow Women's Club website on the link below <http://www.heathrowwomensclub.com/new-membership-gallery> and click on the picture to read the bio.

Our Club is definitely leaning new ways to "Socialize with a Purpose." We may not be meeting in person, but with everyone's ideas and help, we will be able to continue to support our Charities.

"Be thankful for what you have; you'll end up having more. If you concentrate on what you don't have, you will never, ever have enough." — Oprah Winfrey

If you know someone who is looking to help their community while making great friendships, please direct them to our Heathrow Women Club website <http://www.heathrowwomensclub.com/become-member>

If you have any questions concerning membership please feel free to reach out to me.

Sincerely,

Judy Quattry-Membership & Hospitality Chair
Heathrow Women's Club/Heathrow Women's Club Charities, Inc.
membership@heathrowwomensclub.org
407-797-7333

Celebrating 33 years of socializing with a purpose and helping women and children in Seminole County



COLLECT FOR CLUB MEMBERS

*"Keep us, oh God, from pettiness; let us be large in thought, in word, in deed.
 Let us be done with fault-finding and leave off self-seeking.
 May we put away all pretense and meet each other face to face,
 without self-pity and without prejudice.
 May we never be hasty in judgment and always generous.
 Let us take time for all things; and to grow calm, serene, gentle.
 Teach us to put into action our better impulses, straightforward, and unafraid.
 Grant that we may realize it is the little things that create differences,
 that in the big things of life we are at one.
 And may we strive to touch and to know the great, common human heart of us all.
 And, oh Lord God, let us not forget to be kind!"*

By Mary Stewart (1904)

Code of Conduct for Members

1. Members shall strive to abide by the Club Collect.
2. Members shall be dedicated to charitable fundraising and volunteerism for our chosen charities, benefiting women and children in Seminole County.
3. Members shall actively participate to the best of their ability in club activities, committees, and fundraising endeavors/events.
4. Members shall promote friendship, harmony, and good will amongst our members and within our community; therefore, gossip or disparaging words of any kind will not be tolerated.
5. Members shall be hospitable and friendly to guests and new members, warmly welcoming them.
6. The names, addresses, and telephone numbers in the members' directory are to be used for the sole purpose of Heathrow Women's Club business. No member shall be allowed to use these names to solicit business, personal charities, political causes or to make other announcements unrelated to club business.
7. Members shall not solicit during any club business or social activities.

Heathrow Women's Club
 Heathrow Women's Club Charities, Inc.
contact@heathrowwomensclub.org

The Heathrow Women's Club Charities Inc. is a charitable and social 501(c)(3) organization
 Registration #: CH17228

Celebrating 33 years of socializing with a purpose and helping women and children in Seminole County

8. Members shall adhere to the luncheon reservation policy and be financially responsible to pay for untimely cancellations.
9. Heathrow Women's Club/Heathrow Women's Club Charities, Inc. is an all-volunteer non-profit organization which is neither political nor religious.
10. As per our Club By-laws, during any club business or social activities, members shall refrain from making political or religious statements.
11. Members shall be "kind" in every word, action, and deed.

Failure by any member to abide by the Code of Conduct for members shall be subject to immediately having their Club Membership revoked by a quorum vote of the Board of Directors

2020-2021 HWC Board of Directors

<p>PRESIDENT Darlene Entringer president@heathrowwomensclub.org 407-221-7175</p>	<p>WAYS and MEANS Nancy Jones waysandmeans@heathrowwomensclub.org 407-461-6555</p>
<p>CHARITABLE ENDEAVORS Anna Kiss akiss072757@gmail.com 407-782-8637</p>	<p>TECHNICAL SERVICES Cynthia Lebowitz technicalservices@heathrowwomensclub.org 407-257-5351</p>
<p>PROGRAMS Jane Oatway joatway@cfl.rr.com 407-314-6520</p>	<p>SOCIAL Mary Beth Ketelhut mbketelhut@gmail.com 617-620-6348</p>
<p>PUBLIC RELATIONS Kerriane Arnold PR@heathrowwomensclub.org 407-617-1343</p>	<p>MEMBERSHIP/HOSPITALITY Judy Quattry membership@heathrowwomensclub.org 407-797-7333</p>
<p>TREASURER Linda Caron lindacaron866@gmail.com 407-247-6494</p>	<p>CORRESPONDING SECRETARY Becki Miller beckimiller8@gmail.com 407-687-5780</p>
<p>RECORDING SECRETARY Pam Drew pamedrew@yahoo.com 408-891-2526</p>	<p>FOCUS Sheryl Johnson heathrow4now@aol.com 407-284-9788</p>
<p>PARLIAMENTARIAN Patti Neveleff pattinev@hotmail.com 407-463-0223</p>	<p>ADVISOR Lee Granger Leegranger849@yahoo.com 407-782-2508</p>

Heathrow Women's Club
Heathrow Women's Club Charities, Inc.
contact@heathrowwomensclub.org

The Heathrow Women's Club Charities Inc. is a charitable and social 501(c)(3) organization
Registration #: CH17228

Celebrating 33 years of socializing with a purpose and helping women and children in Seminole County

Charitable Endeavors

Anna Kiss-Charitable Endeavors Chair

The charitable endeavors committee has been reaching out to our charities to support them in any way we can. We are collecting gift cards for the Boys and Girls Club, donations of food for SafeHouse, and planning a Thanksgiving food drive.

Of course, this time of year, our biggest project is Secret Santa. Here is an update from our co-chairs:

"Secret Santa is in full swing with such a terrific response from our membership. Once all 70 children listed on the initial spreadsheet are sponsored, then we will add more children to the list in an early November e-Blast.

We have so many lucky children having their holiday wishes filled by you! Your loving support is appreciated by our three

charities and the children they represent in Seminole County.

The gifts and/or gift cards are due for delivery by December 8th to Pat Darrah in Heathrow. She is accepting them every Friday from 1:00 to 4:00 p.m. with full instructions coming to you once you sponsor a child on the wish list spreadsheet.

Secret Santa Co-Chairs,
Pat Darrah -407-312-7126
Connie McDonald - 407-256-2899"

As always, thanks to our members for their continuous and amazing support.

Anna Kiss, Charitable Endeavors Chair
Heathrow Women's Club/Heathrow
Women's Club Charities, Inc.
Akiss072757@gmail.com
(407)782-8637



Heathrow Women's Club
Heathrow Women's Club Charities, Inc.
contact@heathrowwomensclub.org

The Heathrow Women's Club Charities Inc. is a charitable and social 501(c)(3) organization
Registration #: CH17228

Celebrating 33 years of socializing with a purpose and helping women and children in Seminole County

Ways and Means

Nancy Jones-Ways & Means Chair

OUR OCTOBER RAFFLE BASKET BROUGHT IN \$500. Thanks again for the tremendous response. The drawing was held at the home of Beverly Siceloff, September's raffle basket winner. She was so excited and says, "I began to think about the purpose of the basket that I won. Long before my membership, and through fundraisers like this, HWC has helped so many women and children in such a variety of ways. I feel truly blessed and happy to be part of this sincere group of women who do the right things, for the right reasons." Bev was joined by Maria Bajayo and Mary Beth Ketelhut, who created and donated this basket, as she drew the name of MJ Root a guest of our organization.



Mary Beth Ketelhut, Maria Bajayo and Bev Siceloff

Lots of activity going on in Ways and Means, thanks to the support of our committee members, board, and sponsors.

Here are some activities to look forward to:

- **Thanksgiving Turkey Trot** – with all costs covered by Oakmonte Village and all revenue to Heathrow Women's Charities. To order **CLICK IN THE LINK BELOW** <http://www.heathrowwomensclub.com/thanksgiving-turkey-order>
- **Quite Simply Delicious Cookbook** recipe roundup- Check the link below with instructions on how to submit your recipes. **DEADLINE for submission is NOVEMBER 20!** **CLICK** and order here <http://www.heathrowwomensclub.com/quite-simple-delicious-cookbook-roundup>
- **Coming soon** – an online auction to offer bargains to you and test the software. Stay tuned for an announcement.
- **Shop for a Cause – Walk on Water, December 3.** Walk on Water donates 10% of the sales to HWC. Both online and in-store purchases count towards our sales.
- Golf Tournament on April 5, 2021.

The CIRCLE OF GIVING- *The Circle of Giving* <http://www.heathrowwomensclub.com/circle-of-giving> remains an important part of our fundraising.

Heathrow Women's Club
Heathrow Women's Club Charities, Inc.
contact@heathrowwomensclub.org

The Heathrow Women's Club Charities Inc. is a charitable and social 501(c)(3) organization
Registration #: CH17228

Celebrating 33 years of socializing with a purpose and helping women and children in Seminole County

Gifts to Circle of Giving and other Donations go directly to the charitable giving funds (unless specifically earmarked for a particular cause).

We have our Ways & Means meetings via Zoom (our next meeting is November 9 at 4:00 p.m.)

Social

Mary Beth Ketelhut-Social Chair

The Social Committee decides what activities are appropriate for HWC and then plans and executes them.

Our members enjoyed getting together on October 22nd at the homes of Darlene Entringer and Clety Gomez. They both have large outdoor patios so members were able to safely socialize in an outdoor setting while practicing social distancing. Some members commented that this was their first Ladies Night Out since the pandemic. We also collected nonperishable Thanksgiving type food for our charities and, of course, our members gave generously.

*Mary Beth Ketelhut, Social Chair
Heathrow Women's Club/Heathrow Women's Charities, Inc.
socialgroups@heathrowwomensclub.org
617-620-634*

if you want to join the committee (or just want to observe), [here's the link](#).

Regards,

*Nancy Jones, Ways & Means Chair
Heathrow Women's Club/Heathrow Women's Club Charities, Inc.
nancjones@cfl.rr.com
407-461-6555*



Top-Cynthia Lebowitz, Lindsay Freeman with son Noah, Ginny Castellani. Bottom- Mary Beth Ketelhut, Pam Drew, Paola Padovan-Hall, Adrienne Ferrie, Linda Caron, Darlene Entringer, Lee Granger, Cynthia Lebowitz.

Heathrow Women's Club
Heathrow Women's Club Charities, Inc.
contact@heathrowwomensclub.org

The Heathrow Women's Club Charities Inc. is a charitable and social 501(c)(3) organization
Registration #: CH17228

Celebrating 33 years of socializing with a purpose and helping women and children in Seminole County

Public Relations

Kerriane Arnold-Public Relations Chair

We continue to share our club's activities with the community.

The monthly *Heathrow Living* magazine features Heathrow Women's Club through written copy and photos. If you are interested in joining the writing team for this publication, please contact Kerriane Arnold.

The HWC Facebook page receives numerous "likes" as we post photos of our initiatives including the monthly raffle baskets and our online and in-person "socially distanced" events.

We are in need of member photos! If your book club meets online or if you gather on

a member's driveway for a social distancing event, please take photos (your phone is fine!).

Please send them to my email address. I have editing tools if you are concerned about any quality issues.

Reminder: Please save your HWC memorabilia or materials of interest for the upcoming archival process! Ellen Yeaser (eyeaserhwc@aol.com), will arrange to get them.

*Kerriane Arnold- Public Relations Chair
Heathrow Women's Club/Heathrow Women's Club, Inc.
PR@heathrowwomensclub.org
407-617-1343*

Join us in Facebook and Instagram

[Heathrow Women's Club Facebook](#)

[Heathrow Women's Club Instagram](#)

Heathrow Women's Club
Heathrow Women's Club Charities, Inc.
contact@heathrowwomensclub.org

The Heathrow Women's Club Charities Inc. is a charitable and social 501(c)(3) organization
Registration #: CH17228

Celebrating 33 years of socializing with a purpose and helping women and children in Seminole County

Programs

Jane Oatway-Programs Chair

The Programs team has not been able to plan luncheon speakers at this time, but are exploring possible guest speakers to join us on the recorded Zoom calls.

Jane Oatway-Programs Chair
 Heathrow Women's Club/Heathrow Women's Club Charities, Inc.
joatway@cfl.rr.com
 407-314-6520

Corresponding Secretary

Becki Miller, Corresponding Secretary

Remembrance donations - Please think of Heathrow Women's Club Charities **FIRST** when you remember, celebrate, or honor someone in the form of a charitable donation.

The Heathrow Women's Club Charities (HWCC) has donation forms that are easily accessed on the HWC website at <http://www.heathrowwomensclub.com/donations>. Just print out the form by clicking on "Please fill out this form" and mail it with your donation payable to Heathrow Women's Club Charities, Inc., P.O. Box 950145, Lake Mary, FL 32795-0145.

Your gift, thoughts, and kind generosity will be very much appreciated by the ones whom you are honoring, and our charities, that we work so hard for, will benefit greatly as well. *No gift is too large or too small.*

If you'd like to donate to *Christine's Safe Pet Fund*, in memory of our Past President, *Christine Gillen*, please contact Patti Neveleff for more information or visit the Heathrow Women's Club Website at <http://www.heathrowwomensclub.com/christines-safe-pet-fund> where you can click the donate button and give online.

If you know of a club member who is experiencing health problems, undergoing surgery or has a spouse who is experiencing these conditions, please notify me, so that I may send them a note from the club to express our thoughts and support.

Becki Miller- Corresponding Secretary
 Heathrow Women's Club/Heathrow Women's Club Charities, Inc.
Beckimiller8@gmail.com
 407-687-5780

Celebrating 33 years of socializing with a purpose and helping women and children in Seminole County

Treasurer

Linda Caron

THANKS TO ALL WHO HAVE
ALREADY DONATED SO
GENEROUSLY TO OUR
FUNDRAISING EFFORTS THIS YEAR.

We continue to manage the purchase of tickets for our monthly Raffle Baskets as follows:

- Mail a check PAYABLE TO HWCC to Linda Caron, 1552 Cherry Ridge Drive, Heathrow, FL 32746
- Zelle funds to Linda at (407) 247-6494
- Donate using a credit card through our website

Just a quick hint: I am creating an exciting holiday-themed raffle basket for November. I think you will want to purchase a ticket or two! Learn more on Nov. 4, TICKET PURCHASE DEADLINE Nov. 17, and the DRAWING on Nov. 19.

If you get your flu shot at Publix, please consider donating the \$10 Publix gift card you receive to HWCC. You can mail it to me or drop it off. They will be donated to SafeHouse for their food and supplies needs.

*Linda Caron-Treasurer
Heathrow Women's Club/Heathrow Women's
Club Charities, Inc.
lindacaron866@gmail.com
407-247-6494*

*One woman can make a
difference, but together we
can rock the world*

Celebrating 33 years of socializing with a purpose and helping women and children in Seminole County

Charities

Please consider Heathrow Women's Club Charities as your Charity of Choice when donating to commemorate a special occasion, show appreciation, or offer condolences.

The Special Donation Form can be found [here](#). Mail the form along with your check made payable to *Heathrow Women's Club Charities, Inc., PO Box 950145, Lake Mary, FL 32795*. Notification will be sent to the

individual you are honoring, and you will be sent an acknowledgment of your donation. This is a wonderful way to show someone that you are thinking of them and to support our local charities listed below.

With the help of our sponsors listed on the following pages, we can proudly support the below Seminole County charities that benefit women and children.

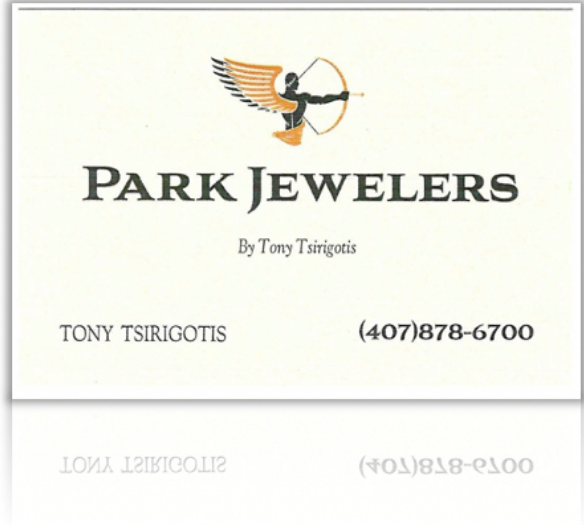


Heathrow Women's Club
Heathrow Women's Club Charities, Inc.
contact@heathrowwomensclub.org

The Heathrow Women's Club Charities Inc. is a charitable and social 501(c)(3) organization
Registration #: CH17228

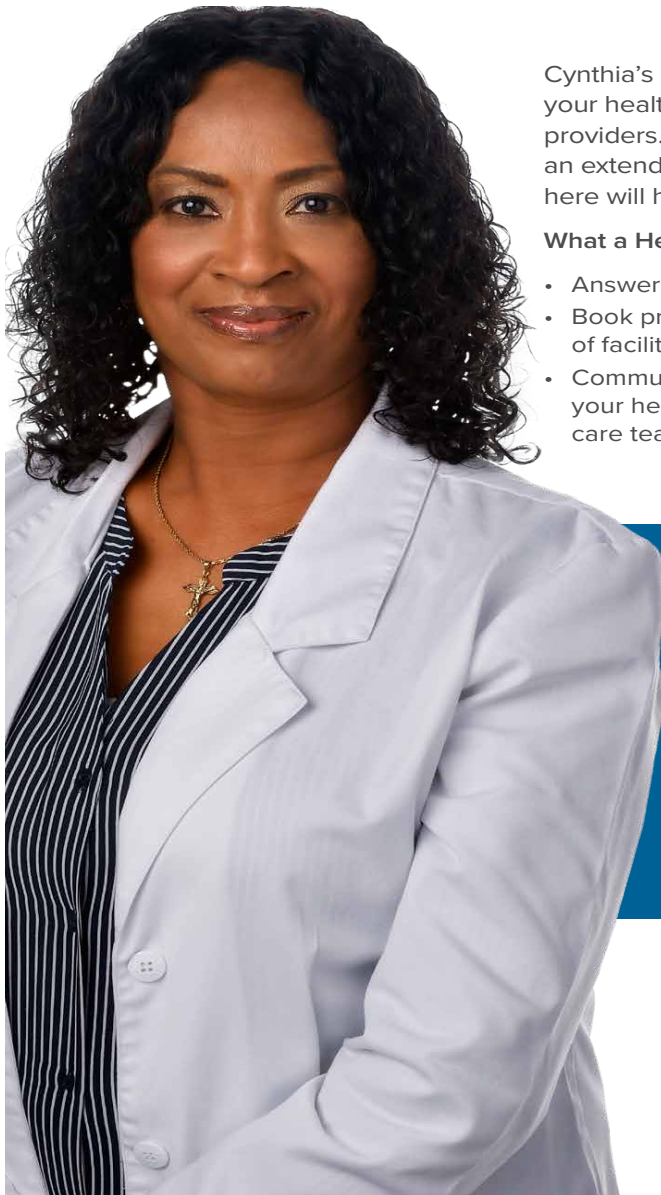
Celebrating 33 years of socializing with a purpose and helping women and children in Seminole County

HEATHROW WOMEN'S CLUB CHARITIES is pleased to present our current SPONSORS. We are grateful for their support and we invite you to show your appreciation and we invite you to show your appreciation by patronizing their business whenever is possible.



Meet Your Health Navigator

Cynthia Hawley, MSN, RN



Cynthia's goal is to provide quality care and make your health care journey easy by partnering with local providers. She says, "Leading with a servant's heart, an extended hand and the power of prayer provided here will help Seminole county grow as a whole."

What a Health Navigator Can Do for You

- Answer your questions
- Book private tours of facilities
- Communicate with your health care team
- Connect you with resources and support
- Explain information
- Find you a doctor or specialist
- Schedule appointments

To speak with your trusted health navigator, contact Cynthia Hawley at 407-303-2689 or cynthia.hawley@adventhealth.com.

AHaltamonte.com/healthnavigator



Celebrating 33 years of socializing with a purpose and helping women and children in Seminole County

Looking for a Financial Consultant who's into accountability?

Steven Porter, CFP®
Vice President, Financial Consultant
Orlando - Maitland Branch
(407) 754-3964
www.schwab.com/maitland



Meet Steven.

Steven believes that when you do the right thing, good will follow. And that honesty and accountability are cornerstones from which all good relationships are built. If this approach sounds like what you're looking for, stop by our Schwab Orlando - Maitland Branch or call Steven today.



Own your tomorrow.

Wealth Management at Charles Schwab
Planning | Portfolio Management | Income Strategies | Banking

There are eligibility requirements to work with a dedicated Financial Consultant. Wealth management refers to products and services available through the operating subsidiaries of The Charles Schwab Corporation of which there are important differences including, but not limited to, the type of advice and assistance provided, fees charged, and the rights and obligations of the parties. It is important to understand the differences when determining which products and/or services to select. The Charles Schwab Corporation provides a full range of securities, brokerage, banking, money management and financial advisory services through its operating subsidiaries. Its broker-dealer subsidiary, Charles Schwab & Co., Inc. (member SIPC), offers investment services and products, including Schwab brokerage accounts. Its banking subsidiary, Charles Schwab Bank (member FDIC and an Equal Housing Lender), provides deposit and lending services and products.

Brokerage Products: Not FDIC-Insured • No Bank Guarantee • May Lose Value
©2018 Charles Schwab & Co., Inc. All rights reserved. Member SIPC. (0415-1912) ADP91947 | 02 (03/18) 214079

Heathrow Women's Club
Heathrow Women's Club Charities, Inc.

contact@heathrowwomensclub.org

The Heathrow Women's Club Charities Inc. is a charitable and social 501(c)(3) organization

Registration #: CH17228

Celebrating 33 years of socializing with a purpose and helping women and children in Seminole County



“The most wasted of days is one without laughter.” *—E.E. Cummings*

A beautiful senior living campus in Lake Mary, The Valencia consists of freestanding villas and apartments. The Cordova offers Assisted Living, and The Siena focuses on Memory Care to lend that helping hand to the senior who needs it.



OAKMONTE
VILLAGE
OF LAKE MARY

www.OakmonteVillage.com

For Villas & Independent Living: *Call: 407-732-5800*

For Assisted Living & Memory Care: *Call: 407-444-0122*

A LUXURY SENIOR RETIREMENT COMMUNITY

Heathrow Women's Club
Heathrow Women's Club Charities, Inc.
contact@heathrowwomensclub.org

The Heathrow Women's Club Charities Inc. is a charitable and social 501(c)(3) organization
Registration #: CH17228

Celebrating 33 years of socializing with a purpose and helping women and children in Seminole County



Acura North Orlando

1001 Rinehart Rd., Sanford, FL 32771

(407) 680-0749

autonationacuranorthorlando.com



As an AutoNation Company, we've helped donate over \$22 million toward cancer research. Together we can drive out cancer.



Heathrow Women's Club
Heathrow Women's Club Charities, Inc.
contact@heathrowwomensclub.org

The Heathrow Women's Club Charities Inc. is a charitable and social 501(c)(3) organization
Registration #: CH17228

Celebrating 33 years of socializing with a purpose and helping women and children in Seminole County

GEICO proudly supports the Heathrow Women's Club Charities.

At GEICO, we know the only way to build stronger communities for tomorrow is to invest our time and energy today.

We call it our insurance plan for the future, and it's a policy we're proud of.



GEICO is a registered service mark of Government Employees Insurance Company, Washington, D.C. 20076; a Berkshire Hathaway Inc. subsidiary. GEICO Gecko image © 1999-2018. © 2018 GEICO

Heathrow Women's Club
Heathrow Women's Club Charities, Inc.
contact@heathrowwomensclub.org

The Heathrow Women's Club Charities Inc. is a charitable and social 501(c)(3) organization
Registration #: CH17228

Celebrating 33 years of socializing with a purpose and helping women and children in Seminole County

LAKE MARY Life

Lake Mary • Heathrow • Sanford • Longwood



Proudly supporting
 the outstanding work of
 The Heathrow Women's Club for
15 years

Count on us for in-depth coverage of local events, people, schools, and organizations.

407-324-2644
LakeMaryLife.com

Bring Your Business to *Life*

3232 W. Lake Mary Blvd., Suite 1420 | Info@LakeMaryLife.com

Celebrating 33 years of socializing with a purpose and helping women and children in Seminole County

Heathrow Living is a proud sponsor of Heathrow Women's Club Charities.



HEATHROW *Living*
 A SOCIAL PUBLICATION EXCLUSIVELY FOR THE RESIDENTS OF HEATHROW



Heathrow Living is the official publication for the Heathrow Community.
 Please contact kaylie.oppedisano@n2pub.com for information on Heathrow Living magazine.

Heathrow Women's Club
 Heathrow Women's Club Charities, Inc.
contact@heathrowwomensclub.org
 The Heathrow Women's Club Charities Inc. is a charitable and social 501(c)(3) organization
 Registration #: CH17228