

# THE 1987-2016 NEWZ

November 2016 Newz Edition

## IN THIS ISSUE

PRESIDENT'S MESSAGE P.1

LUNCHEON INFORMATION  
P.2

SPOTLIGHT P.3

SAVE THE DATES P.4

MEMBERSHIP P.5-6

SOCIAL P.7

WAYS & MEANS P.8-9

CHARITABLE ENDEAVORS  
P.10

GOLF TOURNAMENT P.11

WALK ON WATER P.12

JESSIE'S GIRL P.13

CHARITIES P. 14

SPONSORS P.15-23

CLICK HERE TO  
SEE THE  
CALENDAR

## *A Message from the* President

It's finally starting to feel like fall and our first major fundraiser of the year is quickly approaching! Our Heathrow Women's Club Charities, Inc. 2<sup>nd</sup> Annual Golf Tournament is less than 3 weeks away. We're looking forward to Monday, November 14<sup>th</sup> and our Ways & Means Committee has been doing a great job preparing, but to make sure the event is a huge success we need everyone to step up and help out. Last year the club raised more than \$15,000 at our golf tournament and we are on track to surpass that number in 2016!

The final deadline to become a sponsor, or purchase your sign along our "Hole of Fame" is **Tuesday, November 1<sup>st</sup>**. Golf registration is open until **Monday, November 7<sup>th</sup>**. Please make sure to follow up with anyone you know who has expressed interest or who might be interested in participating. Please take time to read the Ways & Means report for complete details.

Our November luncheon is also quickly approaching on November 8<sup>th</sup>. I'm very excited to have Lt. Jamie Watson, a 24-year veteran of the Winter Park Police Department, joining us as our guest speaker. Remember, reservations and cancellations are due no later than **Tuesday, November 1<sup>st</sup>**. The menu this month will feature a Thanksgiving style buffet. Our Secret Santa tree will have additional names to pick up if you'd like to donate a holiday gift to a child in need. We'll also be collecting non-perishable food items for our Somebody's Hungry program.

We will be promoting our club at the Heathrow Community Funival on Sunday, November 13<sup>th</sup>. We are in need of candy to fill prize bags for the children at the event. If you have any left over Halloween candy please bring it to our November meeting.

Remember, my report is just a highlight of some of the great things we have going on in our club. Please make sure to read reports from our committees in The Newz for more information.

November is a great month to count our blessings and give thanks for our friends and family. I feel very fortunate to consider you all my friends and to be part of such an amazing group of women!! I'm looking forward to seeing you at the November luncheon.



Lindsay Freeman  
President 2016-2017  
Heathrow Women's Club, Inc.

# NOVEMBER LUNCHEON

---

## PROGRAM

---

**Tuesday, November 8, 2016 - Lt. Jamie Watson**

11:00am Registration

11:30am Meeting

12:00pm Lunch

Heathrow's Women's Club will be honored to welcome Lt. Jamie Watson as our speaker on November 8, 2016. Lt. Jamie Watson is a 24+ year veteran of the Winter Park Police Department.

Come join us to meet Lt. Watson, and learn about current high-priority police issues and potential solutions.

The Club is open to all women in Central Florida. (Neither residency in Heathrow nor Country Club membership is required to join the Heathrow Women's Club.) Advanced Registration Required: [www.heathrowwomensclub.com](http://www.heathrowwomensclub.com) by **Tuesday, November 1, at 11:59pm, \$24. (Reservations will NOT be accepted after this date)**

---

## WHAT'S *for* LUNCH?

---

This month we will be offering a buffet featuring:

Mixed Gourmet Greens with Assorted Toppings served with Ranch and Balsamic Dressings, Fresh Cut Fruit, Grilled Salmon with a Champagne Dill Sauce, Roast Turkey Breast with Stuffing and Gravy Sauce, Fresh Vegetable Medley, and Yukon Gold Mashed Potatoes.

Dessert: Chocolate Peanut Butter Pretzel Cake and Valencia Orange Cake with Raspberry and Chocolate Sauces with Fresh Whipped Cream

Rolls and butter, coffee, tea, and water will also be available.

**Cancellation Policy:** Anyone canceling a reservation must do so no later than the Tuesday before the meeting date by calling Telephone Chair Cley Gomez at 407-760-9363 before 11:59pm. If the reservation is not cancelled by that date and you are unable to attend, you will be billed the full cost of the luncheon.

---

## WHAT *to* BRING

---

- \$24.00 for your lunch in cash or check only (Unless you have prepaid online)
- Extra cash to buy raffle tickets for the prize basket
- Unused toiletries from hotel stays for selected Seminole County charities
- Unwanted shoes for Carolyn Taylor's Shoe Sale
- Non-perishable food items for Somebody's Hungry, a canned/boxed goods and toiletries donation charity. Somebody's Hungry will have a table at each HWC luncheon where you can drop off your donated items. A volunteer from HWC will then take those items to a designated food pantry of their choosing. Contact Ingrid at 321-363-6565 if you have any questions. Thanks for your donations.

# SPOTLIGHT

## *Denise McDonald*

As Denise and I were getting started on our lunch visit, I thought I noticed a trace of a Bostonian accent. Turns out Denise is of Italian heritage and is originally from Boston. However, she has lived many places as her insurance-working father's profession took the family to Santa Barbara and Cleveland. There were eight children in the family—that's a lotta pasta! Denise developed a love for people through babysitting and saved enough money from it to buy her first car. Being very close to her siblings and supportive, in 1982, Denise generously donated a kidney to her sister Christine, who then lived another fruitful 23 years.

On the work side, Denise made her career in hospitality and restaurant management. Starting at Denny's in Boston, she fell in love with taking care of people's needs and enjoying the comradery and ever-changing dynamic of a restaurant. She moved to San Jose, where she met and married Mike. Denise managed the in-house, Marriott-run, restaurant at Hewlett-Packard. They then had a daughter, Michelle, and Denise stayed home while she was young. The 1989 recession hit Silicon Valley hard, and they decided it was time for a change. Denise was ready to run her own place, so they bought a B&B in Eureka Springs, AR, built in 1883, and ran it for seven years.



As her daughter grew older, they needed a more stimulating environment and briefly moved back to Boston. Then, they wanted to move south and chose Orlando. First, she worked as a general manager for Einstein Bagels. Along the way, Denise and Mike divorced. Their daughter Michelle grew up and went to UCF, graduated with a degree in hospitality, and immediately began working for Universal Resorts. Meanwhile Denise next worked at the Rosen Shingle Creek Hotel as a VIP Concierge.

Denise met Eric and began helping him with his specialty contracting business, GreenBuilt Home Solutions, Inc. They grew it from the ground up, specializing in energy-efficient window replacements, building sun rooms and screen rooms. Over 50% of their customers are women! Denise worked with Eric part time for 6 years, and then went full time as the Marketing Director and moved to Lake Mary. Most of their marketing is networking and word of mouth. This is perfect for Denise since she really likes the people interaction.

Denise joined HWC in 2014 and really enjoys the variety of activities and the new friendships she has made. She is in one of the bunco groups and supports the Ways and Means Committee. She says "I have no trouble asking people for money!" This ability and attitude, nurtured growing up in Boston, has worked out really well for the HWC charities.

Denise is now the grandma to two grandkids, Luca (6) and Leo (1), and spends Tuesdays with them playing games and just having fun. Additionally, Denise uses her kiln to make jewelry from natural materials, loves going to the Gulf beaches, and volunteers at Habitat for Humanity. I found Denise to be very personable, interesting and a great asset for HWC!

Written By, Lee Granger

# SAVE THE DATES

## BIRTHDAYS

Carolyn Boland - November 1  
Darlene Purvis - November 6  
Carla Durand - November 11  
Shirley Ruoff - November 15  
Sandy Stafford - November 17  
Connie McDonald - November 20  
Denise McDonald - November 20  
Lynette McKee - November 20  
Frieda Dambrasukas - November 24  
Toni Zufelt - November 25  
Kathy Hammerling - November 28

## ANNIVERSARIES

Shelley and Roger Pynn - November 5  
Ellen and Tom Yeaser - November 7  
Irene and Hector Ponce - November 16  
Cindy and James Price - November 20  
Patti and Steve Neveleff - November 22  
Claris and Bernie Koglin - November 24  
April and Bob Darrow - November 25  
Joyce and Mel Berger - November 26  
Rachael and Steven Guernsey - November 30

## EVENTS

November 4	Deadline for Hole Sponsors, Hole of Fame and Dinner attendees
November 7	Deadline for Golfers
November 8	Monthly Luncheon Meeting at the Heathrow Country Club
November 9	Meeting for Golf Volunteers at Sawyer Lake Park
November 12	Shoe Sale at Longwood Hills Congregational Church
November 14	2nd Annual Golf Tournament at the Heathrow Country Club
November 16	Holiday Shopping for a Cause at Walk on Water, Lake Mary
December 1	Holiday Shopping for a Cause at Jesse's Girl Boutique, Lake Mary
December 13	Annual Bake Sale at the Monthly Luncheon Meeting at the Heathrow Country Club
April 7	Major Fundraising Event at the Lake Mary Event Center

To see all of the upcoming events visit [www.heathrowwomensclub.com/calendar](http://www.heathrowwomensclub.com/calendar)

# MEMBERSHIP

The Membership Committee keeps a record of all of our current and new members. Additionally, we want to make sure everyone in our club knows how much we care for one another. If you know of a fellow club member who needs a note of encouragement, sympathy, support, celebration or congratulations please send an email to [correspondingsecretaryHWC@gmail.com](mailto:correspondingsecretaryHWC@gmail.com) and we'll make sure to reach out to them on behalf of the club and our membership.

We want to welcome all members, new members, and guests. Our membership count is up to 160 fabulous ladies with 21 new members already this year! If any guest or friend of any member is interested in joining the Heathrow Women's Club, visit the club's website: [www.heathrowwomensclub.com](http://www.heathrowwomensclub.com) to download the membership form or contact Kristan Priem at [membershiphwc@gmail.com](mailto:membershiphwc@gmail.com).



**Dale Danuff** - Dale and Ed are long time residents of Keenwicke in Heathrow. Dale is a substitute teacher and mother of two daughters; a 20 year old and a 15 year old. She stays busy with her many hobbies. She enjoys tennis, swimming, traveling, knitting, biking, walking and dancing. She joined HWC to get involved in hands-on charity activities and make new friends.



**Gayle Gattuso** - Gayle and Nicholas live in the Apopka area. She retired from Seminole County as a Reading Coach. Cooking, gardening, reading and traveling keep her busy, as well as six stepchildren, twelve grandchildren and three great grandchildren. Her friend, Adrienne DeRienzo, introduced her to HWC and encouraged her to join. She is looking forward to getting involved with fundraising and meeting new people.



**Ruth Jones** - Ruth recently moved to Florida (Magnolia Plantation) from Michigan this past June. Her many hobbies include quilting, biking, motorcycles, singing and hiking. She has three children and four grandchildren. As a strong supporter of women and children's causes, she is looking forward to meeting new people and getting involved.



**Janice Junkin** - Janice just recently moved to Heathrow from Baton Rouge, LA so that she could be closer to her two grandsons (ages 2& 4). She's a realtor and in her spare time she enjoys playing tennis and being with her grandchildren. Her previous involvement with charitable organizations was Quota, a professional organization. Janice wants to continue giving back to the community and she's hoping to meet new people while helping others.

Kristan Priem  
[MembershipHWC@gmail.com](mailto:MembershipHWC@gmail.com)



**Ellen Lind** - Ellen recently moved to Florida from Vermont. She lives in Regency Green in Heathrow. She is retired from a career in Interior Design. She has three children and four grandchildren.



**Marianne Payne** - Marianne and Marc live in Stratford Gardens in Heathrow and have been there for the past two years. She works full-time as an office manager for her husband's business. She enjoys bike riding and wants to get involved with the HWC biking group and is looking forward to "socializing with a purpose".



**Susan Roberts** - Susan lives in Winter Springs and has lived in the area since 2005. She owns Susan's Treasure Chest , an online gift shop and has exhibits at retail and wholesale trade shows. Susan is a former Heathrow Women's Club member. She enjoys playing bunco and has three stepdaughters.



**Lesli Sickler** - Leslie and Robert are long-time Florida residents who currently reside in Longwood. She is a full-time, full service travel consultant and also handles the marketing for her husband's company. Her hobbies include travel, mountain biking, hiking and cooking. She has 2 daughters, one is in high school and the other in middle school. She is looking forward to socializing and making a difference in the community.



**Cathy Turner** - Cathy and Steven live in the Carrington Park subdivision of Heathrow. Cathy is originally from Indiana and has spent half her time there for work the past three years. She is contemplating retirement and spending more time enjoying her hobbies: walking, taking care of her animals, biking sewing, and crafting. She has one daughter and is looking forward to getting involved in our charities when in town.

# SOCIAL

The Social Committee decides what activities are appropriate for HWC and then plans and executes them.

## Social Events

Happy Hour Social was a huge success. Approximately 80 people gathered at Linda and Bill Richardson's home to enjoy food, wine and music. If you were unable to participate you will have another opportunity to participate in the Spring Happy Hour Social.

## Social Activities

We will have sign-up sheets at the November monthly luncheon for Euchre card game. We are still looking for members who would like to sign up for new Bunco and Book Clubs.

Happy Socializing....with a purpose!

Please call or email if you have any new ideas for social activities.



Mary Beth Ketelhut  
617-620-6348

[socialgroupshwc@gmail.com](mailto:socialgroupshwc@gmail.com)

# WAYS & MEANS

The Ways & Means Committee selects, plans, and executes all of the fundraising events for Heathrow Women's Club Charities, Inc.

**See pages 11-13 for Flyers Describing Our Golf Tournament and Shopping Events - Sign-up at the November Luncheon or contact Ways & Means!**

Greetings from Ways & Means!

Our October Spa Raffle Basket was donated by Carolyn Taylor and Toni Zufelt and brought in a whopping \$359 for our charities! Congratulations to new member Marianne Payne who purchased the winning ticket! As a reminder, all proceeds from our fund raising events benefit: Bags of Hope Central Florida; Boys & Girls Club of Central Florida, W. Sanford Branch; SafeHouse of Seminole and Seminole County Friends of Abused Children.

## **Golf Tournament**

In just a couple of weeks, Heathrow Women's Club Charities will hold its 2nd Annual Golf Tournament at Heathrow Country Club on **Monday, November 14**. The event is a scramble-shotgun start for men and women of all levels. That means everyone gets to contribute even if it's just putting! Get a Hole-in-One on Hole #9 and you will win a Mercedes generously donated by Mercedes-Benz of North Orlando and there will be additional prizes for a Hole-in-One on the other Par 3's as well! Thank you to Mercedes-Benz of North Orlando for their continued support of our club and charitable endeavors! Prizes will also be given to men and women for Closest to the Pin, Straightest Drive and Longest Drive and players can also purchase a Mulligan Package including a Raffle Ticket. We have outstanding Raffle items and also exciting Golf Packages and much more that that will be offered in a Silent Auction.

For those members who don't play golf and would like to make a contribution to the Tournament, Hole #18 will be our "Hole of Fame" where we will display signage from all individual members of our club who contribute \$100 to HWCC. "Holes" may also be purchased in honor or in memoriam of a member, friend or family member. This is a perfect opportunity to publicly show your support to our charities and the efforts of our organization. Contact Linda Richardson to secure your sign and/or sign-up your foursome or individual golfers.

For HWC members who are not playing golf, you may purchase a ticket for \$30 to attend the Golf Barbecue Dinner that evening. Space is limited so your cash or check is your confirmed reservation. **Note: You must sign-up and pay for the dinner prior to our November Luncheon! Contact Ellen Yeaser to attend.**

If you know anyone who would like to play or sponsor a hole at the event, please contact Linda Richardson - [linda.romanpackaging@gmail.com](mailto:linda.romanpackaging@gmail.com). **Note: Deadline for Hole Sponsors, Hole of Fame and Dinner attendees is November 4, and the deadline for golfers is November 7.**

## **Shoe Sale**

HWC Member Carolyn Taylor will once again collect your new/like new wearable shoes at our November Luncheon for her "**Shoe Sale**" benefitting HWCC. The sale will take place on **Saturday, November 12** from 9:00 am - 1:00 pm at Longwood Hills Congregational Church. November 8. **Please bring in a box or bag and note the shoe size and original price if you know it on a slip of paper or tag and place in the shoe.** Thanks Carolyn for your donation to our club!



### HWCC Shirts

If you purchased an HWCC shirt, Linda Richardson will have them at the November Luncheon. Please be sure to wear your shirt when representing HWCC in the community and especially if you are a volunteer at the Golf Tournament. If you didn't purchase a shirt and would like one, there will be a limited supply of shirts available at the November Meeting. Shirts are \$20.

### Mark Your Calendar Now For These Upcoming Events:

- **Wednesday, November 9** - Special Meeting for Golf Volunteers - 4:00 pm at Sawyer Lake Park
- **Saturday, November 12** - Carolyn Taylor's Shoe Sale with all Proceeds Benefitting HWCC
- **Monday, November 14** - 2nd Annual HWCC Golf Tournament, Heathrow Country Club
- **Wednesday, November 16** - Give Back Shopping Event at Walk on Water, Colonial Town Park
- **Thursday, December 1** - Give Back Shopping Event at Jesse's Girl Boutique, Lake Mary
- **Tuesday, December 13** - Annual Bake Sale at the December Luncheon Meeting
- **Friday, April 7** - "Bourbon Street Jazz" at the Lake Mary Event Center
- **Every Luncheon Meeting** - Raffle Baskets donated by our members

If you are interested in becoming involved in Ways & Means and have not yet signed up, please contact Linda Richardson or Ellen Yeaser, Ways & Means Co-Chairs. We appreciate your participation and the donation of your time and talent to those in our need.



Linda Richardson (407-832-7356) and Ellen Yeaser (407-491-8302)  
Co-Chairs, Ways & Means  
[WaysandMeansHWC@gmail.com](mailto:WaysandMeansHWC@gmail.com)

# CHARITABLE ENDEAVORS

Charitable Endeavors reviews all potential charities to be supported by Heathrow Women's Club and Heathrow Women's Club Charities, Inc. CE also arranges local volunteer opportunities and donations.

A great big thank you to all those ladies who attended the Boys and Girls Club "Faces of the Future" Breakfast held on September 27th. All the proceeds raised at the breakfast will benefit the Boys & Girls Club. An additional thank you to all those members and guests who attended "An Evening With Friends" held at the Mercedes-Benz of North Orlando on September 29th. The proceeds from this event will benefit Seminole County Friends of Abused Children. Keep in mind that we are in constant need of volunteers to participate in the monthly birthday parties at Boys & Girls Club.

Your generous food donations for the "Somebody's Hungry" went to St. Vincent de Paul Society at All Souls Catholic Church in Sanford. This organization gives food to needy individuals throughout the Seminole County area. The "Secret Santa" tree went up at our October Meeting and will once again be up at our November Meeting.



Peggy Pyle and Rosemary Robinson  
Co-Chairs Charitable Endeavors  
[CharitableEndeavorsHWC@gmail.com](mailto:CharitableEndeavorsHWC@gmail.com)



# HEATHROW®

Women's Club Charities, Inc

## 2ND ANNUAL GOLF TOURNAMENT

Heathrow Country Club | 1200 Bridgewater Drive, Heathrow, FL 32746  
 Monday, November 14, 2016 | Check in 11am, Shot-Gun Scramble 12pm

### All Proceeds Benefit:

Bags of Hope Central Florida | Boys & Girls Club of Central FL, W. Sanford Branch  
 SafeHouse of Seminole | Seminole County Friends of Abused Children

**Presenting Sponsor: \$2000**  
 4 Golfers Participate in Tournament  
 2 Hole Sponsor Signs  
 Scoreboard Signage  
 Recognition on printed materials, web,  
 & social media

**Gold Sponsor: \$1000**  
 4 Golfers Participate in Tournament  
 1 Hole Sponsor Sign  
 Scoreboard Signage

**Silver Sponsor: \$750**  
 2 Golfers Participate in Tournament  
 1 Hole Sponsor Sign  
 Scoreboard Signage

**Hole-In-One Sponsor**  
 Mercedes-Benz of North Orlando  


**Putting Green Sponsor:**  
 Edwin Watts Golf 

**Beverage Sponsor: \$300**  
 Signage at Beverage Stations

**Hole Sponsor: \$100**  
 Hole Signage and visibility on tee

Individual Player: \$125  
 4 Person Team: \$500  
 Includes: Includes Range Balls, Box Lunch,  
 Buffet Dinner,  
 Prizes, Raffle, Goodie Bag and More.....  
*(Buffet Dinner Only - \$30 per person)*

Make Checks Payable To: HWCC  
 Mail Sponsorship Form, Check, and/or CC Form to:  
 HWCC c/o Linda Richardson  
 PO Box 950145  
 Lake Mary, FL 32795

Heathrow Women's Club Charities is a 501(c)(3) Charitable Organization  
 REGISTRATION #: CH17228 - A COPY OF THE OFFICIAL REGISTRATION AND FINANCIAL INFORMATION MAY BE OBTAINED FROM THE DIVISION OF CONSUMER  
 SERVICES BY CALLING TOLL-FREE (800-435-7352) WITHIN THE STATE. REGISTRATION DOES NOT IMPLY ENDORSEMENT, APPROVAL OR RECOMMENDATION BY THE STATE

For additional information or questions, please contact: Linda Richardson at 407-832-7356  
 or Linda.RomanPackaging@gmail.com

# WALK ON WATER &



Women's Club Charities, Inc.

## Holiday Shop for a Cause

On Wednesday, November 16, come to Walk on Water in Colonial Town Park, Lake Mary, and shop for the Holidays. Mention you are a member of Heathrow Women's Club Charities and Walk on Water will donate 10% of all HWCC sales to our charities through Sunday, November 20.

Wednesday, November 16

Wine & Appetizers will be served

5:30 — 7:30 pm





## Holiday Shopping for a Cause!!

### JESSE'S GIRL BOULEVARD BOUTIQUE

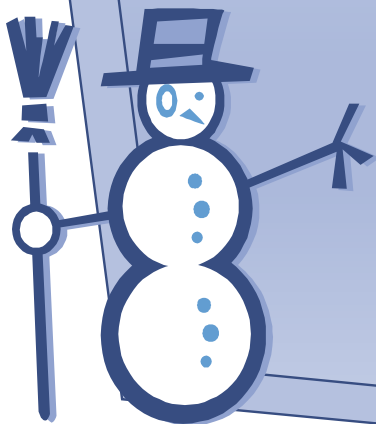
Posh & Preppy – Apparel, Jewelry & Gifts

Thursday, December 01

5:30-7:30 pm

4044 W. Lake Mary Boulevard

Shop at Jesse's Girl on December 1 and the Boutique will donate 20% of all retail sales back to Heathrow Women's Club Charities. Enjoy wine and cheese and special discounts just for Heathrow Women's Club members. Come out with friends and family and "Shop for a Cause"!

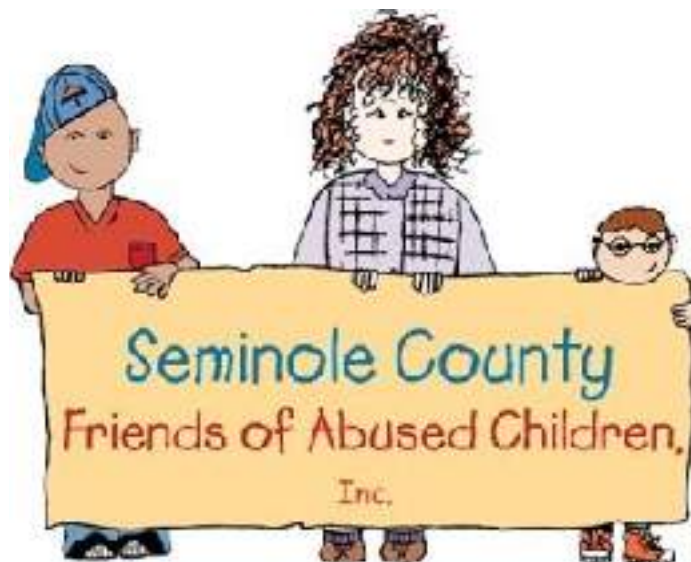


[www.heathrowwomensclub.com](http://www.heathrowwomensclub.com)

# CHARITIES

Please Consider Heathrow Women's Club Charities as your Charity of Choice when making a donation to commemorate a special occasion, show appreciation or offer condolences. The Special Donation Form can be found [here](#) or contact Sheryl Johnson at 407-284-9788. Mail the form along with your check made payable to: Heathrow Women's Club Charities, Inc., PO Box 950145, Lake Mary, FL 32795. Notification will be sent to the individual you are honoring and you will be sent an acknowledgement of your donation. This is a wonderful way to show someone that you are thinking of them and to support our local charities listed below.

With the help of our sponsors listed on the following pages, we are able to proudly support the below Seminole County charities that benefit women and children.



# SPONSORS

Heathrow Women's Club Charities is pleased to present our current Sponsors. We are grateful for their support and we invite you to show your appreciation by patronizing their business whenever possible.



**McLean**  
INSURANCE GROUP

Mike McLean  
President/Owner

3070 W. Lake Mary Blvd., Suite 124  
Lake Mary, FL 32746

Mike@McLean4Insurance.com  
www.McLean4Insurance.com

FOR A PRIDE YOU'LL LIVE  
GMAA WINE

Tel: 407-324-5662  
Cell: 407-402-8683



**PARK JEWELERS**

Tony Tsirigods 407-878-6700

**MYPARKJEWELERS.COM**

7025 CR 46A, Suite 1080, Lake Mary, FL 32746

**PIERCE  
JEWELERS**

1135 Townpark Avenue • Suite 119  
Lake Mary, FL 32746

407-330-8285  
www.piercejewelers.com



**Dexter's**  
LAKE MARY

John Hoffmelster  
407.805.3090  
Fax 407.936.0950

1145 Townpark Ave., Suite 1201 - Lake Mary, FL 32746  
Indexters@dexwine.com • www.dexwine.com



**FLORIDA CANCER  
SPECIALISTS**  
& Research Institute

*World Class Medicine. Hometown Care.*

**Celebrating 30 Years of Hope**

Florida Cancer Specialists & Research Institute (FCS) is the largest independent privately-held medical oncology/hematology practice in the U.S. and is committed to supporting local community charities and organizations.

917 Rinehart Rd # 2041, Lake Mary, FL 32746  
(407) 330-1788 Fax: (407) 447-9143  
[www.FLCancer.com](http://www.FLCancer.com)

**BONEFISH  
GRILL®**



1761 W State Road 434  
Longwood  
(407) 331-4256



**AHT Hearing Aids**  
Accurate Hearing Technology, Inc.  
**Lisa H. Ballinger, MS/CCC-A**  
Owner/Audiologist  
**Lauren C. Laney**  
Office Manager

**407-328-4540**  
[www.AHTHearing.com](http://www.AHTHearing.com)

5268 West S.R. 46  
Sanford, FL. 32771  
Lake Forest Publix Shopping Center



*Sharing Knowledge for a  
Brighter Direction*



**United Systems  
and Software, Inc.**





# FLORIDA HOSPITAL

*The skill to heal. The spirit to care.®*

## From investing to advising. **We're here for you.**

When you walk into your local Schwab branch, you can count on getting the help you need to achieve your goals— from banking to investing to retirement planning. Drop by our local branch anytime for a professional assessment of where you are now and where to go next.



Travis Loseke  
V.P., Financial Consultant  
Orlando—Maitland Branch  
1991 Summit Park Drive  
Orlando, FL 32810  
(407) 754-3947



*charles* SCHWAB

©2011 Charles Schwab & Co., Inc.  
All rights reserved. Member SIPC.  
FDIC Equal Housing Lender Member NMLS

Get branch  
information.





# Live the Lifestyle You've Earned!

*Independent Living, Assisted Living, and Memory Care*



## *Affordable Luxury Senior Living*

Life at Oakmonte Village offers all of the commodities of home without the challenges, problems, and responsibilities of home ownership. Our residents can have all of the privacy and independence of living at home while we help them to enjoy everything else that the community has to offer. Whether in our independent apartments and villas, our assisted living and memory care units, or our brand new memory care building, our residents focus on living each day to the fullest!

*Call:* (407) 732-5802 . *Or Visit:* [www.OakmonteVillage.com](http://www.OakmonteVillage.com)

## Proud Sponsor of the Heathrow Women's Club.



Mercedes-Benz  
of North Orlando



1100 Rinehart Road • Sanford, FL

**866-769-0350**



Follow us socially for special offers and discounts

Sanford, Florida – No Minimum Order – Booth #

Roman Packaging [R] Roman Promotional



Bags [R] Boxes [R] Giftwrap [R] Ribbon/Bows [R] Tissue  
Tagging Supplies [R] Garment Covers [R] Gift Cards

*Your Packaging is Your Brand! Have Roman Packaging Create a Custom Packaging Program for You!*

Roman [R] Packaging | 1160 Central Park Drive, Sanford, Florida 32771  
855-981-BAGS (2247) | sales.romanpackaging@gmail.com

[www.romanpackaging.com](http://www.romanpackaging.com)



Add more  
**freedom**  
to your  
independence.  
**We did!**


*Residents shown moved from Heathrow to Village on the Green.*

**You're Independent.** But that's only after you've taken care of the cooking, cleaning, home repairs, yardwork, taxes and occasional treks to the doctor. In fact, when you think about it, *it might feel like you sacrifice an awful lot of freedom to maintain your independence.*

**We can fix that.** We'll take care of the chores, layer on the services and amenities, and optimize the possibilities. We'll even make Gold Seal health care available on campus, just in case you ever need it.

**Sound good?** A number of Heathrow residents agree. They've moved here and discovered what you can discover too – a beautiful community, friendly neighbors and all the freedom you need to get the most out of your independence.

**Call for a tour and be our guest for lunch.  
1.888.870.0948**

**VILLAGE ON THE GREEN®** 

**A LIFESPACER COMMUNITY®**

500 Village Place  
Longwood, Florida 32779

[www.villageonthegreenrc.com](http://www.villageonthegreenrc.com)



# Shining our light

on the Heathrow Women's Club.



**LAKE MARY** Life  
 Lake Mary • Heathrow • Sanford • Longwood  
 July/August 2015 | Vol. 13 • Issue 4

Together Again...  
 for the *First* Time

Though they'd never met, two local women help each other battle - and beat - breast cancer.



The entire staff of  
**Lake Mary Life**  
 congratulates you as you  
 celebrate your 28th year of  
 socializing with a purpose.

**around town**

### Heathrow Women's Club: Charity Begins with Fun

For more than 25 years, members of the Heathrow Women's Club (HWC) have been perfecting their club motto: Socializing with a Purpose.

This year, record-breaking membership and fundraising efforts resulted in donations of more than \$45,000 to local charities for women and children. At the club's recent end-of-year luncheon, the retiring board was thanked, the incoming board was inducted, checks were distributed, and, as usual, everyone had a great time.

Checks were distributed to the following organizations:

- Friends of Abused Children and Families**  
 Accepted by Emily Strathmore and Sharon Graham. Faith reported that there are presently 500 children involved in the court system in Seminole County. The club's contributions toward support training, sports programs, arts programs, Secret Santa, and support for children who have aged out of the system.
- SafeHouse of Seminole Deycare/After School Program**  
 Accepted by Mary Skoway and Jennifer Pincus. Since January, six families with a total of nine children successfully transitioned from SafeHouse into their own housing units. That's nine children who are now being raised in violence-free homes.
- Bags of Hope Central Florida**  
 Accepted by Sharda Savarin and Kathy Reynolds. The club not only contributed funds to provide food for disadvantaged families, but its members also logged more than 600 hours of volunteerism.
- Boys & Girls Clubs of Central Florida, West Sanford Branch**  
 Accepted by Alicia Hodge and Nic Freeman. The funding received from HWC has allowed the West Sanford Branch to enhance and expand the quality programs and projects for at-risk youth. HWC also holds a monthly holiday party, making children feel like royalty.

This year, in addition to the charities mentioned above, HWC also supported the Lake Mary High School Graduating with Dignity cost of graduation. The club also provided gift cards for the 2015 Teacher of the Year program.

1. Recipients of the club's generosity, along with chairs of the Men and Women of Charitable Endeavors Committee.
2. Incoming board of directors and outgoing chairs for the 2015-2016 year.
3. Linda Richardson accepts the President's Award from outgoing club president Christine Collier.
4. New club president Cathy.
5. Representing the theory Club of Lake Mary, Reed Kano thanks members for sponsoring students in the Graduating with Dignity program, which was initiated during the time that Reed was principal of Lake Mary High School.



**WOMEN OWNED BUSINESS OF THE YEAR 2015**

One of Seminole County's award-winning small businesses for 2015



**LAKE MARY** Life  
 Lake Mary • Heathrow • Sanford • Longwood

407-324-2644 • LakeMaryLife.com

# Heathrow Living is a proud sponsor of Heathrow Women's Club Charities.



## HEATHROW Living

A SOCIAL PUBLICATION EXCLUSIVELY FOR THE RESIDENTS OF HEATHROW



Heathrow Living is the official publication for the Heathrow Community. Please contact [kaylie.oppedisano@n2pub.com](mailto:kaylie.oppedisano@n2pub.com) for information on Heathrow Living magazine.

# 75

YEARS OF  
*Savings & Service*

15 minutes could save you 15%  
or more on car insurance.\*

Get a quote.

**GEICO**

geico.com | 1-800-947-AUTO | Local Office

