

A Message from the President

Darlene Entringer- President

H *Despite the global pandemic when many organizations have nearly "shut down," you all "ramped up!"* You have purchased tickets for the raffle baskets, donated to the food drives, supported the Oakmonte Turkey Project, contributed your recipes for the upcoming cookbook fundraiser, bid on items in the RallyUp auction, and set a gift-giving record for our Secret Santa program. **THANK YOU and give yourselves a hearty pat on the back!**

In an effort for our 100 members to stay connected, your **Board of Directors created the "Stronger Together"** program and have reached out to talk to you personally. Many of you eagerly welcome this connection and your opportunity to share your ideas, suggestions, and concerns. We also hosted the all-members Zoom call in December and will be hosting the Valentine-themed Zoom call on February 9. It's fun to see our friends

again, even if it's on the computer screen! The holiday letter was mailed to each member to highlight our past and future initiatives.

As we enter 2021, we hope for the ability to meet together, share in-person fundraising activities, and safely move throughout our community. In the meantime, **we continue to create unique opportunities to strengthen member relationships, support our charities, and share our goals. THANK YOU to each of you for renewing or joining, and THANK YOU for participating in our initiatives!**

Wishing you and HWC a very HAPPY NEW YEAR!

Darlene Entringer- President
Heathrow Women's Club/Heathrow Women's Club Charities, Inc.
President@heathrowwomensclub.org
407-221-7175

Heathrow Women's Club
Heathrow Women's Club Charities, Inc.
contact@heathrowwomensclub.org

The Heathrow Women's Club Charities Inc. is a charitable and social 501(c)(3) organization
Registration #: CH17228

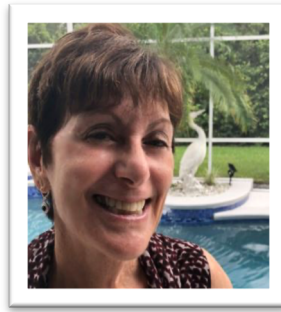
Celebrating 33 years of socializing with a purpose and helping women and children in Seminole County

Spotlight

Adrienne Ferri

by Kerriane Arnold

This month's spotlight is **Adrienne Ferri**. Adrienne grew up in a beautiful small town in northern New Jersey called Nutley, about 15 minutes outside of New York City. Her father was a chemical engineer and her mother had a degree in nutrition and was a homemaker. She has 2 older sisters, Cathi, who currently lives in Philadelphia, PA, and Christine, who lives in Walnut Creek, CA.



Adrienne went to the University of Georgia where she majored in speech pathology. She went on to work as a medical speech pathologist in hospitals and children centers, including starting the speech pathology department at the hospital she was working at. She loved her job as a Speech Pathologist and misses the interaction.

Adrienne has been married to her husband Ralph for 48 years. They met in the 7th grade and were always good friends with common interests and goals. After they married, they moved to Brick Township, New Jersey, down the Jersey shore. They have one daughter, Gina, who lives in Orlando.

Adrienne and her husband retired and moved to Lake Mary in May of this year to

be close to their daughter. At the shore, she enjoyed sailing and racing a 14-foot Sandpiper Cat Boat and a Sunfish. She and Ralph are avid fishermen and frequently fished at the shore and in Costa Rica. They hope to continue to fish off Ponce Inlet. She is also learning to play golf, enjoys traveling, and loves to cook. She enjoys walking and taking care of their two golden retrievers, Munson and Casey, both named after Yankee baseball players!

She has been involved in multiple charitable organizations throughout her life. She volunteered at the High School Arts fundraising program and the school's PTA. She donated time and involvement at her local parish, her sailing club, and the Girl Scout Special needs program. She has held several positions in the organizations including the president, treasurer, secretary, and chairperson for a variety of fundraising projects.

Adrienne has a strong desire to give back and said being a part of the Heathrow Women's Club Charities (HWCC) is a bit of an extension of her career in that she can impact others and their daily lives. HWC also allows her to meet people from her new area. She joined the Ways and Means Committee and the book club and is

Heathrow Women's Club
Heathrow Women's Club Charities, Inc.
contact@heathrowwomensclub.org

The Heathrow Women's Club Charities Inc. is a charitable and social 501(c)(3) organization
Registration #: CH17228

Celebrating 33 years of socializing with a purpose and helping women and children in Seminole County

currently chairing the cookbook fundraising committee. The best part of HWC for Adrienne is the women - they are interesting, diverse, and have been welcoming.

Kerriane Arnold
Public Relations Chair
PR@heathrowwomensclub.org
407-617-1343

Membership & Hospitality

Judy Quattry - Membership & Hospitality Chair

Hello, everyone! I am happy to report that as this writing **The HWC membership is now at 102 members**. If you know someone who is looking to help their community while making great friendships, please direct them to our website:
<http://www.heathrowwomensclub.com/become-member>

Your **HWC Board of Directors' new program "Stronger Together"** has been initiated and we have been getting great feedback from the members we are contacting. One of the members that I spoke with told me that getting this call from a Board Member really made her feel appreciated. She felt that as our club grows it is important to remember that it takes everyone to make The Heathrow Women's club successful.

Don't forget to utilize all our ways of staying connected Facebook, Email Blasts, HWC website, Instagram & Text messages.

"The best and most beautiful things in the world cannot be seen or even touched. They must be felt with the heart. Wishing you happiness." - Helen Keller

If you have any questions concerning membership, please feel free to reach out to me.

Sincerely,

Judy Quattry-Membership & Hospitality Chair
HWC/Heathrow Women's Club Charities, Inc.
membership@heathrowwomensclub.org
407-797-7333

Celebrating 33 years of socializing with a purpose and helping women and children in Seminole County



COLLECT FOR CLUB MEMBERS

*"Keep us, oh God, from pettiness; let us be large in thought, in word, indeed.
 Let us be done with fault-finding and leave off self-seeking.
 May we put away all pretense and meet each other face to face,
 without self-pity and without prejudice.
 May we never be hasty in judgment and always generous.
 Let us take time for all things; and to grow calm, serene, gentle.
 Teach us to put into action our better impulses, straightforward, and unafraid.
 Grant that we may realize it is the little things that create differences,
 that in the big things of life we are at one.
 And may we strive to touch and to know the great, common human heart of us all.
 And, oh Lord God, let us not forget to be kind!"*

By Mary Stewart (1904)

Code of Conduct for Members

1. Members shall strive to abide by the Club Collect.
2. Members shall be dedicated to charitable fundraising and volunteerism for our chosen charities, benefiting women and children in Seminole County.
3. Members shall actively participate to the best of their ability in club activities, committees, and fundraising endeavors/events.
4. Members shall promote friendship, harmony, and good will amongst our members and within our community; therefore, gossip or disparaging words of any kind will not be tolerated.
5. Members shall be hospitable and friendly to guests and new members, warmly welcoming them.
6. The names, addresses, and telephone numbers in the members' directory are to be used for the sole purpose of Heathrow Women's Club business. No member shall be allowed to use these names to solicit business, personal charities, political causes or to make other announcements unrelated to club business.
7. Members shall not solicit during any club business or social activities.

Heathrow Women's Club
 Heathrow Women's Club Charities, Inc.
contact@heathrowwomensclub.org

The Heathrow Women's Club Charities Inc. is a charitable and social 501(c)(3) organization
 Registration #: CH17228

Celebrating 33 years of socializing with a purpose and helping women and children in Seminole County

8. Members shall adhere to the luncheon reservation policy and be financially responsible to pay for untimely cancellations.
9. Heathrow Women's Club/Heathrow Women's Club Charities, Inc. is an all-volunteer non-profit organization which is neither political nor religious.
10. As per our Club By-laws, during any club business or social activities, members shall refrain from making political or religious statements.
11. Members shall be "kind" in every word, action, and deed.

Failure by any member to abide by the Code of Conduct for members shall be subject to immediately having their Club Membership revoked by a quorum vote of the Board of Directors

2020-2021 HWC Board of Directors

PRESIDENT Darlene Entringer president@heathrowwomensclub.org 407-221-7175	
TREASURER Linda Caron lindacaron866@gmail.com 407-247-6494	WAYS and MEANS Nancy Jones waysandmeans@heathrowwomensclub.org 407-461-6555
PROGRAMS Jane Oatway joatway@cfl.rr.com 407-314-6520	SOCIAL Mary Beth Ketelhut socialgroups@heathrowwomensclub.org 617-620-6348
PUBLIC RELATIONS Kerriane Arnold PR@heathrowwomensclub.org 407-617-1343	MEMBERSHIP/HOSPITALITY Judy Quattry membership@heathrowwomensclub.org 407-797-7333
TECHNICAL SERVICES Cynthia Lebowitz technicalservices@heathrowwomensclub.org 407-257-5351	CORRESPONDING SECRETARY Becki Miller beckimiller8@gmail.com 407-687-5780
RECORDING SECRETARY Pam Drew pamedrew@yahoo.com 408-891-2526	FOCUS Sheryl Johnson heathrow4now@aol.com 407-284-9788
PARLIAMENTARIAN Patti Neveleff pattinev@hotmail.com 407-463-0223	ADVISOR Lee Granger Leegranger849@yahoo.com 407-782-2508

Heathrow Women's Club
 Heathrow Women's Club Charities, Inc.
contact@heathrowwomensclub.org

The Heathrow Women's Club Charities Inc. is a charitable and social 501(c)(3) organization
 Registration #: CH17228

Celebrating 33 years of socializing with a purpose and helping women and children in Seminole County

Charitable Endeavors

Darlene Entringer

The December Food Drive for Milwee Middle School was a huge success! HWC members and two "friends" donated many, many bags of food delivered to the school on Dec. 16, in time for students and families to receive items for the holiday break. The school representative texted, "Thank you so much for your generous donations and kindness. The ladies of the women's club are amazing!"



Nancy Jones, Leslie Guerra, and Darlene Entringer load up the bags of food and delivered them to Milwee Middle School.

The HWC donations filled the Milwee's golf cart twice!

Secret Santa Update

The overwhelming support from the wonderful members of HWC made this Christmas truly special for 107 children from our three charities represented - SafeHouse (28 gift cards), Friends of Abused Children (51 bags of gifts), and The Foundation for Seminole County Public Schools (28 gift cards).

Jean Vansmith, Executive Director of The Foundation for Seminole County Public Schools, wrote: "Thank you so much for the holiday gift cards for our homeless students. 28 was much more than we expected and will give 28 students a very Merry Christmas. It's so nice for them to have something to look forward to after a tough year. Please pass on my appreciation to all the HWC members. I hope you all have a wonderful holiday season!"

With our thanks and gratitude,
Pat Darrah and Connie McDonald
Secret Santa Co-chairs

For questions on the HWC Charitable Endeavors projects, please contact our HWC President Darlene Entringer at: President@heathrowwomensclub.org

Heathrow Women's Club
Heathrow Women's Club Charities, Inc.
contact@heathrowwomensclub.org

The Heathrow Women's Club Charities Inc. is a charitable and social 501(c)(3) organization
Registration #: CH17228

Celebrating 33 years of socializing with a purpose and helping women and children in Seminole County

Ways and Means

Nancy Jones-Ways & Means Chair

Congratulations to Bonnie Albert who will be "Blinging in the New Year" in style as the winner of the December raffle basket, donated by Ginny Castellani and Ellen Yeaser. **This over-the-top 2-part raffle basket brought in \$875.** Thanks again for your tremendous response and congratulations to Bonnie! **The next drawing will be on January 19, with a raffle basket donated by Beverly Siceloff and Lois Davis.**



Ginny Castellani and Ellen Yeaser.

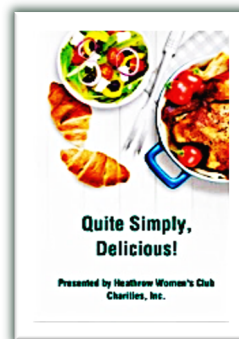
RallyUp Auction

Our first online auction was a success in many ways. We confirmed that we can manage the process fairly easily with the help of software. Thanks to Ellen Yeaser's generous donation of auction items (and several general donations), **we had a total of**

\$1,293 raised for our charities. We re-confirmed that handbags sell well - something to be considered for the next auction. **Stay tuned for info on our next auction – probably in February.**

The HWC Cookbook

We are in the final proofing stages of our HWC "Quite, Simple Delicious" cookbook. Thanks again for all the contributors and supporters! We'll have news on how to order soon.



Circle of Giving

Happy New Year! 2021 brings many opportunities for the women of HWC. One is a "reboot" of the Circle of Giving. During this unprecedented year, the needs of so many have greatly increased and our ability to raise money has become more difficult. As many of you know, the Circle of Giving was created 4 years ago to recognize the women of HWC who have donated money to further our causes. We want to recognize these ladies for all that they do, so the "circle" was formed.

Heathrow Women's Club
Heathrow Women's Club Charities, Inc.
contact@heathrowwomensclub.org

The Heathrow Women's Club Charities Inc. is a charitable and social 501(c)(3) organization
Registration #: CH17228

Celebrating 33 years of socializing with a purpose and helping women and children in Seminole County

All active members of our club, in good standing, are eligible to participate. The entry-level consists of a minimum \$50 donation to HWCC (Heathrow Women's Club Charities). To donate, click here: <http://www.heathrowwomensclub.com/circle-of-giving>

Please watch for upcoming information about the enhanced Circle of Giving, its levels, and "thank you" acknowledgments!

Looking forward to seeing you all soon.
Patti Neveleff and Clety Gomez
Project Chairs

Treasurer

Linda Caron

Thanks to all who are so generously supporting our numerous causes this year! *The ticket deadline for the RAFFLE BASKET will be on January 19 with the drawing on Jan. 22. Tickets are \$5 each and may be purchased as follows:*

- You can mail a check made PAYABLE TO HWCC to me:
Linda Caron, 1552 Cherry Ridge Drive, Heathrow, FL 32746
- You can Zelle funds to me at:
(407) 247-6494
- You can donate with a credit card through the HWC website at:
<http://www.heathrowwomensclub.com/donations>

Several members have sent in their money with instructions to purchase tickets for several months in advance. Thank you to so many of you who purchase \$25 increments,

Meetings

Our next Ways and Means **Zoom meeting will be Monday, January 11, 2021**. If you wish to join us, please click on this link: <https://us02web.zoom.us/j/86005945743>

Regards,

Nancy Jones, Ways & Means Chair
Heathrow Women's Club/Heathrow Women's Club Charities, Inc.
nancjones@cfl.rr.com
407-461-6555

just as if you were attending a monthly luncheon.

In December we mailed a holiday donation of \$500 to each of our four charities. In the thank you letter we received from The Foundation for Seminole County Public Schools acknowledging our donation, Jean Vansmith the Executive Director added a handwritten note: *"Thank you for supporting our students and teachers!"* . Gary Cain, President & CEO of the Boys & Girls Club of Central Florida, writes, *"Thank you for being here ... and helping us do whatever it takes!"*

Happy New Year to all!

Linda Caron-Treasurer
Heathrow Women's Club/Heathrow Women's Club Charities, Inc.
lindacaron866@gmail.com 407-247-6494

Heathrow Women's Club
Heathrow Women's Club Charities, Inc.
contact@heathrowwomensclub.org

The Heathrow Women's Club Charities Inc. is a charitable and social 501(c)(3) organization
Registration #: CH17228

Celebrating 33 years of socializing with a purpose and helping women and children in Seminole County

Corresponding Secretary

Becki Miller, Corresponding Secretary

Remembrance donations - Please think of Heathrow Women's Club Charities **FIRST** when you remember, celebrate, or honor someone in the form of a charitable donation. The HWCC has donation forms that are easily accessed on the HWC website at:

<http://www.heathrowwomensclub.com/donations>

Your gift, thoughts, and kind generosity will be very much appreciated by the ones whom you are honoring, and our charities. that we work so hard for, will benefit greatly as well. **You will be hearing more about the exciting enhancements to this program soon!**

If you'd like to donate to *Christine's Safe Pet Fund*, in memory of our Past President,

Public Relations

Kerriane Arnold- Public Relations Chair

We are seeking WRITERS! If you are interested in joining the writing team for The Heathrow Living magazine, please contact me.

The HWC Facebook page receives numerous "likes" as we post photos and information about our initiatives. Please use the "share" function to spread the word!

Christine Gillen, please contact Patti Neveleff for more information or visit the Heathrow Women's Club Website at <http://www.heathrowwomensclub.com/christines-safe-pet-fund> here you can click the donate button and give online.

If you know of a club member who is experiencing health problems, undergoing surgery, or has a spouse who is experiencing these conditions, please notify me, so that I may send them a note from the club to express our thoughts and support.

Becki Miller- Corresponding Secretary
Heathrow Women's Club/Heathrow Women's Club Charities, Inc.
Beckimiller8@gmail.com
407-687-5780

We are in need of MEMBER PHOTOS! Please send them to my email address. I have editing tools if you are concerned about any quality issues.

Kerriane Arnold- Public Relations Chair
Heathrow Women's Club/Heathrow Women's Club, Inc.
PR@heathrowwomensclub.org
407-617-1343

Celebrating 33 years of socializing with a purpose and helping women and children in Seminole County

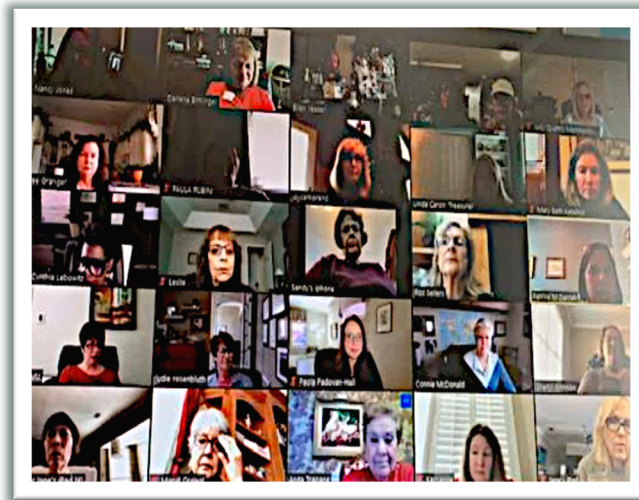
Programs

Jane Oatway-Programs Chair

The Programs team has not been able to plan luncheon speakers at this time, but are exploring possible guest speakers to join us on the recorded Zoom calls. ***Thirty-five of our members joined the December Zoom meeting.***

In addition to committee updates, Alicia Hodge from the Boys and Girls Club provided a recorded message and a video. This event is posted on the HWC website. We have heard that you enjoyed seeing your friends on the screen.

On Tuesday, February 9, all members are invited to join a special Valentine-themed Zoom call. Stay tuned for the details!



HWC members during the December Zoom meeting

Jane Oatway-Programs Chair
 Heathrow Women's Club/Heathrow Women's
 Club Charities, Inc.
joatway@cfl.rr.com
 407-314-6520

Social

MaryBeth Ketelhut

The Social Committee decides what activities are appropriate for HWC and then plans and executes them.

Since many of our members are trying to stay safe during this pandemic, we will continue to plan virtual activities. In addition to the virtual wine tasting in October and January, our committee is looking into planning a virtual tea tasting in the Spring.



Join us for a Ladies Night Out "Around the World" Virtual Wine Tasting on Thursday, January 21st at 6:30 pm. Hosted by Spill Wine Bar and Tuscany Distributors, each tasting kit includes:

- Four, 4 oz. pours of hand-selected wines
- A sampling of delicacies paired with the wines
- A live hosted virtual tasting

Heathrow Women's Club
 Heathrow Women's Club Charities, Inc.
contact@heathrowwomensclub.org

The Heathrow Women's Club Charities Inc. is a charitable and social 501(c)(3) organization
 Registration #: CH17228

Celebrating 33 years of socializing with a purpose and helping women and children in Seminole County

The cost is \$35 per person and tickets must be purchased in advance through Eventbrite by the end of the day on January 18th.

Ticket holders will be able to pick up their tasting kit in advance of the tasting in Lake Mary (Timacuan). We will be sending out an email communication with the Eventbrite link and passcode to our membership with information to purchase your tickets.

If you are a member not serving on the social committee but have a suggestion for

an activity, please contact Mary Beth Ketelhut directly.

We all look forward to happier times when we will be able to gather more frequently with our Heathrow Women's Club friends and socialize WITH A PURPOSE!

Sincerely,

*Mary Beth Ketelhut, Social Chair
Heathrow Women's Club/Heathrow Women's
Charities, Inc.
socialgoups@heathrowwomensclub.org
617-620-634*

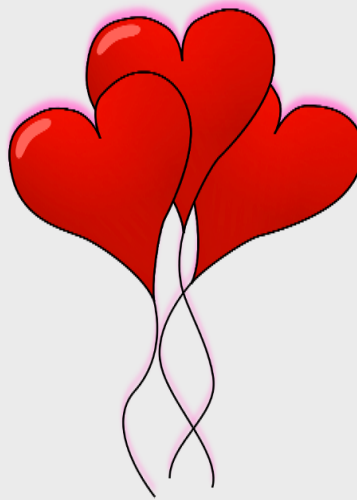


Heathrow Women's Club
Heathrow Women's Club Charities, Inc.
contact@heathrowwomensclub.org

The Heathrow Women's Club Charities Inc. is a charitable and social 501(c)(3) organization
Registration #: CH17228

Celebrating 33 years of socializing with a purpose and helping women and children in Seminole County

Mark Your 2021 Calendar For These Heathrow Women's Club Events



January 15th – Last day to purchase
Raffle tickets for January basket
January 17th -Drawing

February 9th- All-member
Valentine-themed
ZOOM meeting

April 5th- HWC Golf Tournament

Celebrating 33 years of socializing with a purpose and helping women and children in Seminole County

Charities

Please consider Heathrow Women's Club Charities as your Charity of Choice when donating to commemorate a special occasion, show appreciation, or offer condolences.

The Special Donation Form can be found [here](#). Mail the form along with your check made payable to Heathrow Women's Club Charities, Inc., PO Box 950145, Lake Mary, FL 32795. Notification will be sent to the

individual you are honoring, and you will be sent an acknowledgment of your donation. This is a wonderful way to show someone that you are thinking of them and to support our local charities listed below.

With the help of our sponsors listed on the following pages, we can proudly support the below Seminole County charities that benefit women and children.

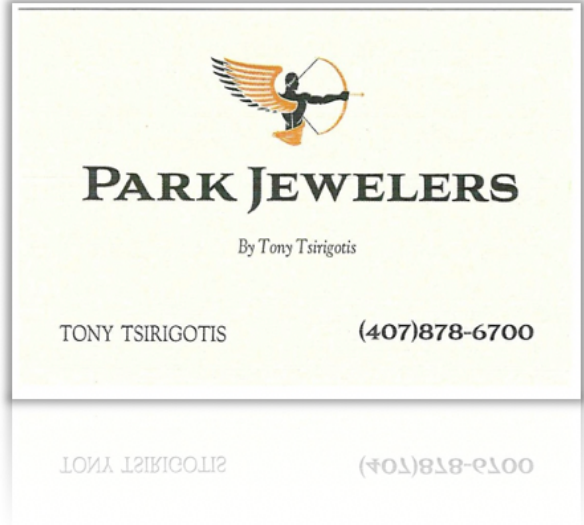


Heathrow Women's Club
Heathrow Women's Club Charities, Inc.
contact@heathrowwomensclub.org

The Heathrow Women's Club Charities Inc. is a charitable and social 501(c)(3) organization
Registration #: CH17228

Celebrating 33 years of socializing with a purpose and helping women and children in Seminole County

HEATHROW WOMEN'S CLUB CHARITIES is pleased to present our current SPONSORS. We are grateful for their support and we invite you to show your appreciation and we invite you to show your appreciation by patronizing their business whenever is possible.



Celebrating 33 years of socializing with a purpose and helping women and children in Seminole County



Nationally Recognized Women's Care

From well-woman services to pregnancy care, our award-winning team creates a personalized approach to women's health needs at every stage. Our convenient network of comprehensive women's care throughout Central Florida includes OB/GYN, advanced gynecologic surgery, urogynecology and four Baby Place locations in Altamonte Springs, Celebration, Orlando and Winter Park. Let our Health Navigators answer your questions and connect you with a provider focused on you.

HerHealthNavigator.com

20-WOMENS-09812



Heathrow Women's Club
 Heathrow Women's Club Charities, Inc.
contact@heathrowwomensclub.org

The Heathrow Women's Club Charities Inc. is a charitable and social 501(c)(3) organization
 Registration #: CH17228

Celebrating 33 years of socializing with a purpose and helping women and children in Seminole County

Looking for a
Financial
Consultant
who's into
accountability?

Steven Porter, CFP®
Vice President, Financial Consultant
Orlando - Maitland Branch
(407) 754-3964
www.schwab.com/maitland



Meet Steven.

Steven believes that when you do the right thing, good will follow. And that honesty and accountability are cornerstones from which all good relationships are built. If this approach sounds like what you're looking for, stop by our Schwab Orlando - Maitland Branch or call Steven today.



Own your tomorrow.

Wealth Management at Charles Schwab
Planning | Portfolio Management | Income Strategies | Banking

There are eligibility requirements to work with a dedicated Financial Consultant. Wealth management refers to products and services available through the operating subsidiaries of The Charles Schwab Corporation of which there are important differences including, but not limited to, the type of advice and assistance provided, fees charged, and the rights and obligations of the parties. It is important to understand the differences when determining which products and/or services to select. The Charles Schwab Corporation provides a full range of securities, brokerage, banking, money management and financial advisory services through its operating subsidiaries. Its broker-dealer subsidiary, Charles Schwab & Co., Inc. (member SIPC), offers investment services and products, including Schwab brokerage accounts. Its banking subsidiary, Charles Schwab Bank (member FDIC and an Equal Housing Lender), provides deposit and lending services and products.

Brokerage Products: Not FDIC-Insured • No Bank Guarantee • May Lose Value

©2018 Charles Schwab & Co., Inc. All rights reserved. Member SIPC. (0415-1912) ADP91947 | 02 (03/18) 214079

Heathrow Women's Club
Heathrow Women's Club Charities, Inc.

contact@heathrowwomensclub.org

The Heathrow Women's Club Charities Inc. is a charitable and social 501(c)(3) organization

Registration #: CH17228

Celebrating 33 years of socializing with a purpose and helping women and children in Seminole County



“The most wasted of days is one without laughter.” *—E.E. Cummings*

A beautiful senior living campus in Lake Mary, The Valencia consists of freestanding villas and apartments. The Cordova offers Assisted Living, and The Siena focuses on Memory Care to lend that helping hand to the senior who needs it.



OAKMONTE
VILLAGE
OF LAKE MARY

www.OakmonteVillage.com

For Villas & Independent Living: *Call: 407-732-5800*

For Assisted Living & Memory Care: *Call: 407-444-0122*

A LUXURY SENIOR RETIREMENT COMMUNITY

Celebrating 33 years of socializing with a purpose and helping women and children in Seminole County



Acura North Orlando

1001 Rinehart Rd., Sanford, FL 32771

(407) 680-0749

autonationacuranorthorlando.com



As an AutoNation Company, we've helped donate over \$22 million toward cancer research. Together we can drive out cancer.



Heathrow Women's Club
Heathrow Women's Club Charities, Inc.
contact@heathrowwomensclub.org

The Heathrow Women's Club Charities Inc. is a charitable and social 501(c)(3) organization
Registration #: CH17228

Celebrating 33 years of socializing with a purpose and helping women and children in Seminole County

GEICO proudly supports the Heathrow Women's Club Charities.

At GEICO, we know the only way to build stronger communities for tomorrow is to invest our time and energy today.

We call it our insurance plan for the future, and it's a policy we're proud of.



GEICO is a registered service mark of Government Employees Insurance Company, Washington, D.C. 20076; a Berkshire Hathaway Inc. subsidiary. GEICO Gecko image © 1999-2018. © 2018 GEICO

Celebrating 33 years of socializing with a purpose and helping women and children in Seminole County

LAKE MARY Life
Lake Mary • Heathrow • Sanford • Longwood

LAKE MARY Life
Lake Mary • Heathrow • Sanford • Longwood

LAKE MARY Life
Lake Mary • Heathrow • Sanford • Longwood

Sailing Royalty
1134
B&C

Strive to Thrive
LAKE MARY HONORS THE
INTELLIGENCE AND
PROUDNESS OF OUR
PROFESSIONALS

The Stars of the Road
THE STARS OF THE ROAD
THE STARS OF THE ROAD
THE STARS OF THE ROAD

**Proudly supporting
the outstanding work of
The Heathrow Women's Club for
15 years**

Count on us for in-depth coverage of local events, people, schools, and organizations.

407-324-2644
LakeMaryLife.com

Bring Your Business to *Life*

3232 W. Lake Mary Blvd., Suite 1420 | Info@LakeMaryLife.com

Heathrow Women's Club
 Heathrow Women's Club Charities, Inc.
contact@heathrowwomensclub.org
 The Heathrow Women's Club Charities Inc. is a charitable and social 501(c)(3) organization
 Registration #: CH17228

Celebrating 33 years of socializing with a purpose and helping women and children in Seminole County

Heathrow Living is a proud sponsor of Heathrow Women's Club Charities.



HEATHROW *Living*
 A SOCIAL PUBLICATION EXCLUSIVELY FOR THE RESIDENTS OF HEATHROW



Heathrow Living is the official publication for the Heathrow Community.
 Please contact kaylie.oppedisano@n2pub.com for information on Heathrow Living magazine.

Heathrow Women's Club
 Heathrow Women's Club Charities, Inc.
contact@heathrowwomensclub.org
 The Heathrow Women's Club Charities Inc. is a charitable and social 501(c)(3) organization
 Registration #: CH17228

Celebrating 33 years of socializing with a purpose and helping women and children in Seminole County